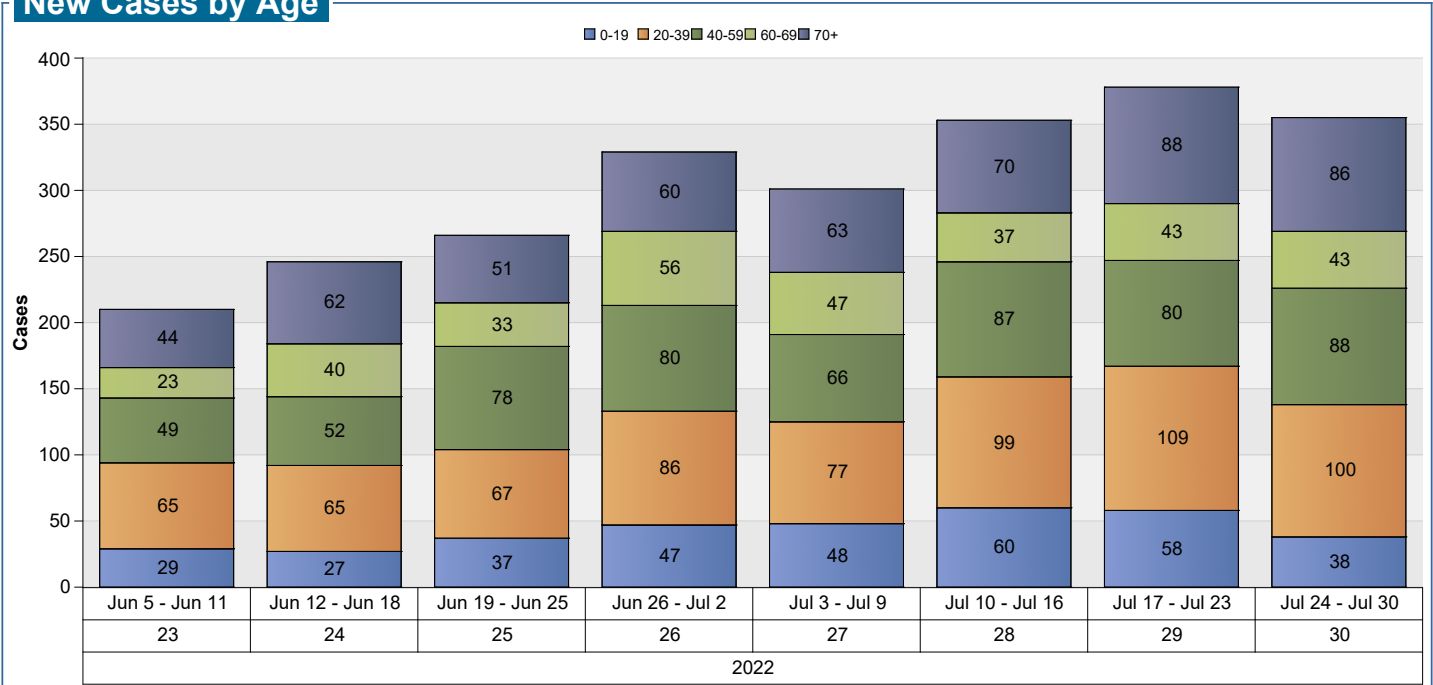


Yellowstone County COVID-19 Information

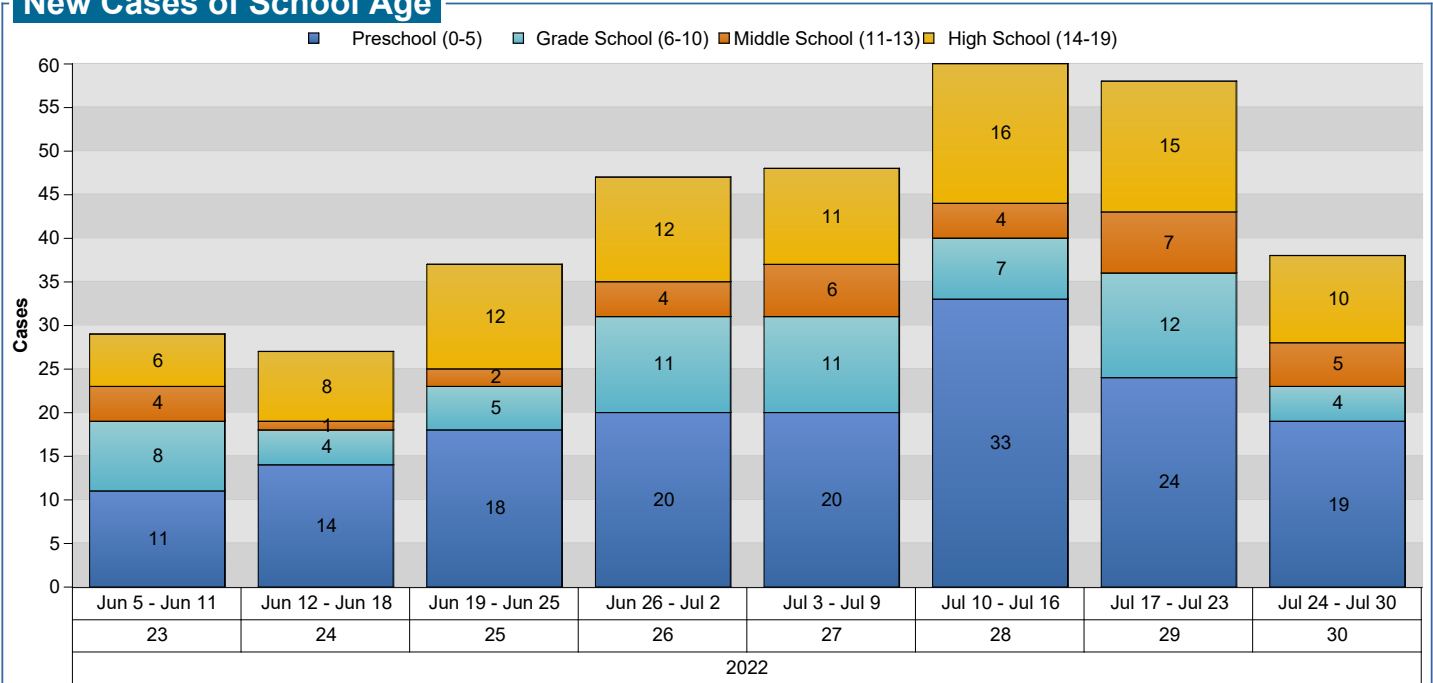
Updated through week ending July 30, 2022

New Cases by Age



New COVID-19 cases in Yellowstone County are grouped into age ranges denoted by colors on this bar graph.

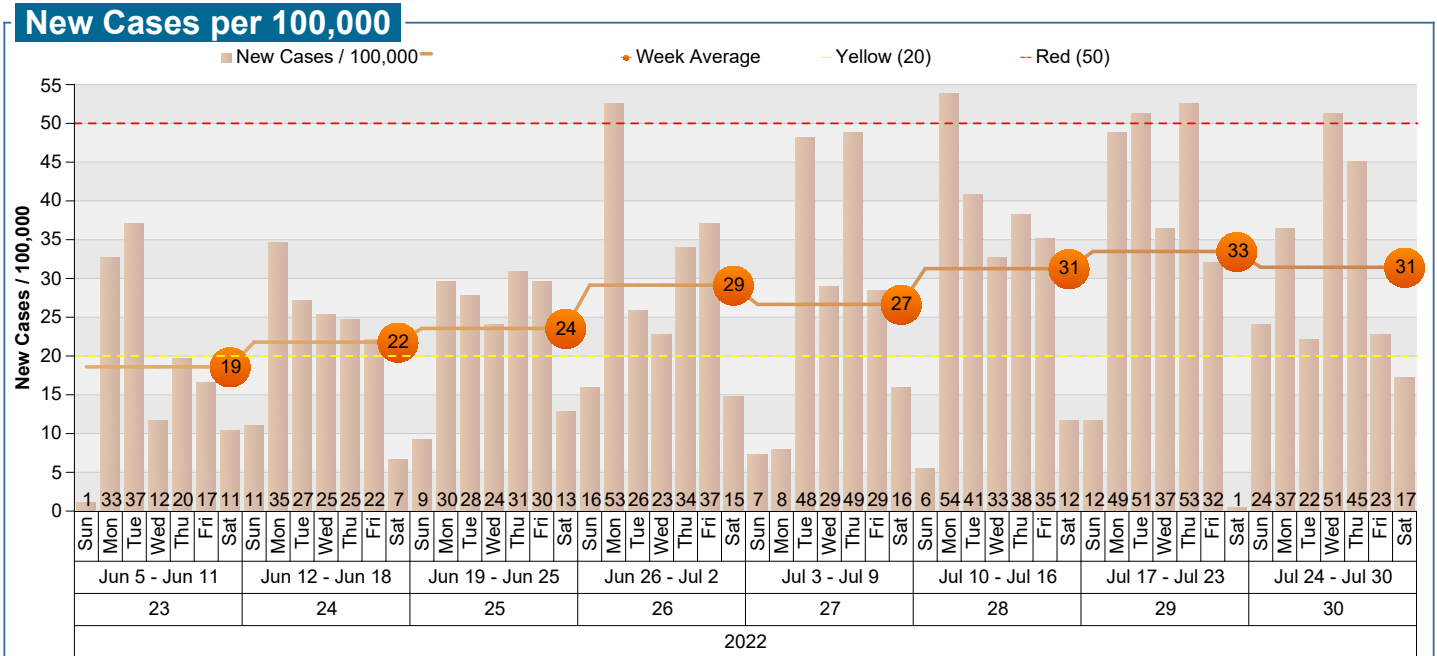
New Cases of School Age



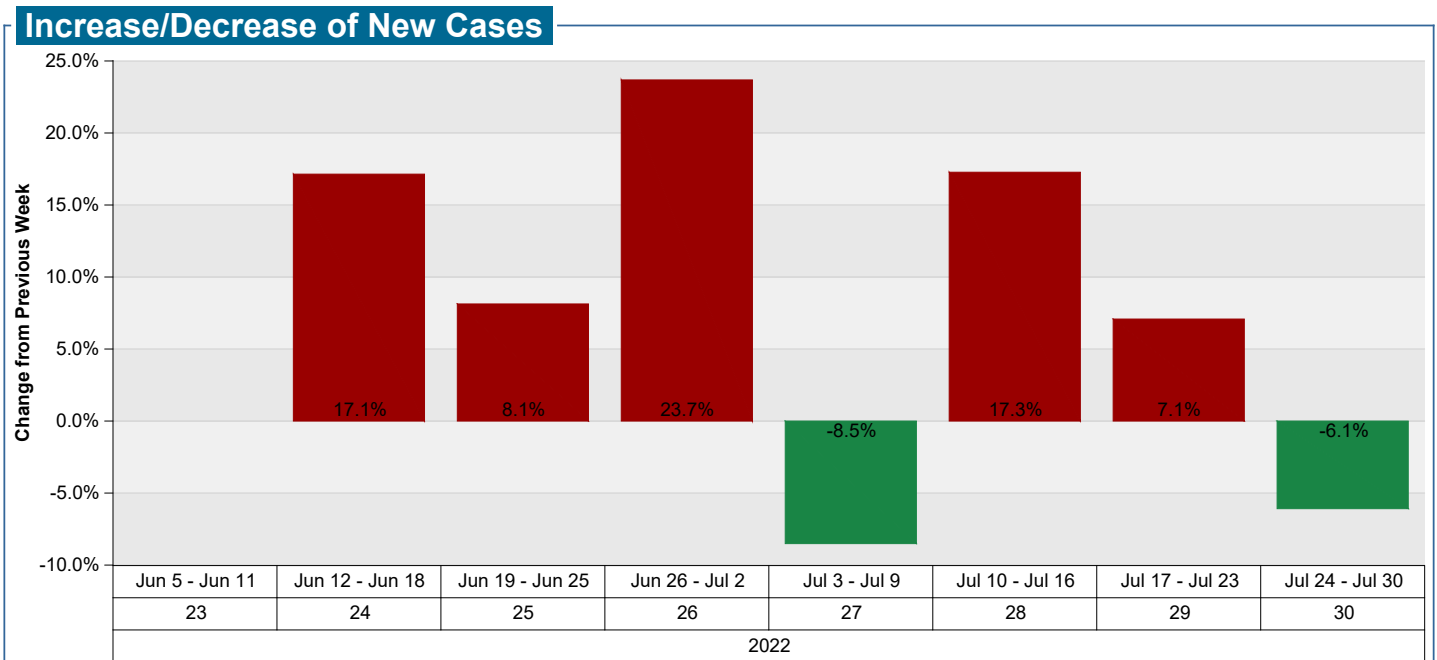
New cases among Yellowstone County school-age children are grouped into color-coded categories based on ages from preschool (0-5) through high school (14-19).

Yellowstone County COVID-19 Information

Updated through week ending July 30, 2022



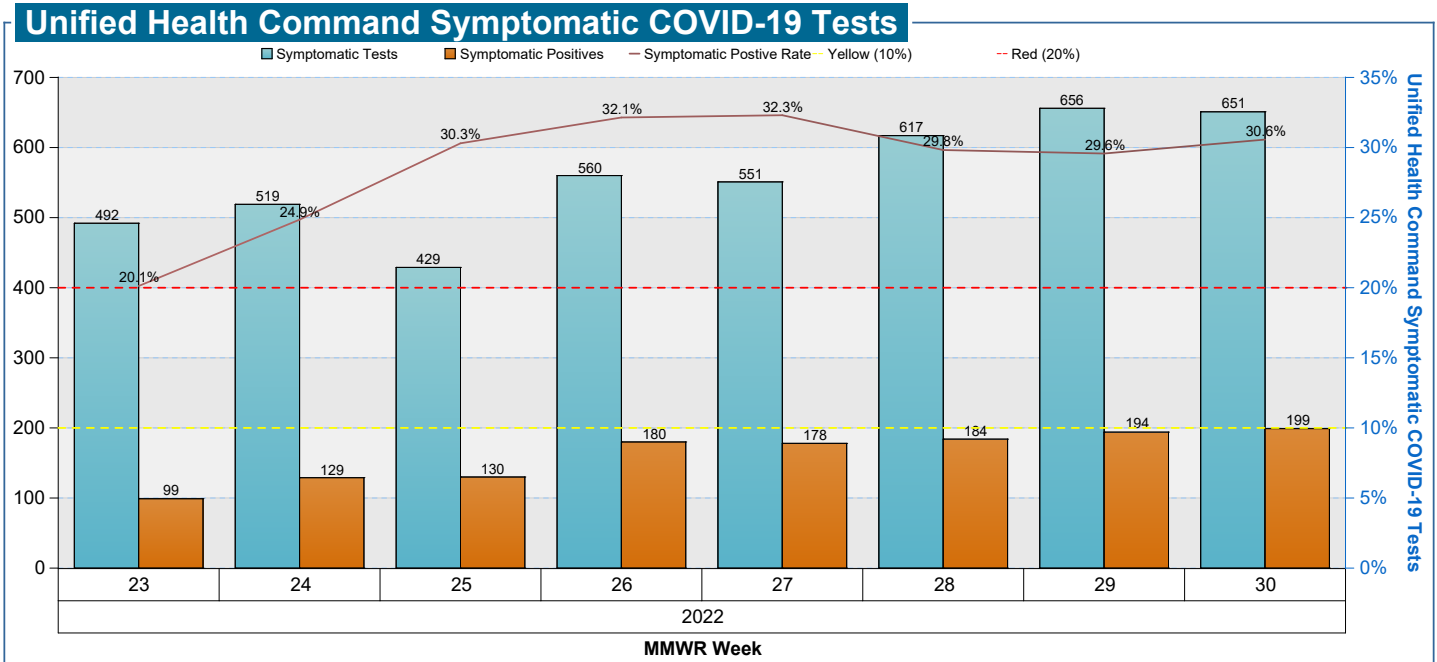
The number of new cases each day, per 100,000, is shown as a bar graph. The brown line represents the weekly average daily case count per 100,000. This figure comes from the number of cases per day, divided by 161,300 (population of Yellowstone County), multiplied by 100,000, averaged over a 7-day period. The yellow dotted line indicates 20 new cases per 100,000. The red dotted line indicates a threshold of 50 new cases per 100,000. The orange dot is the average of new cases per 100,000 for the previous 7-day period.



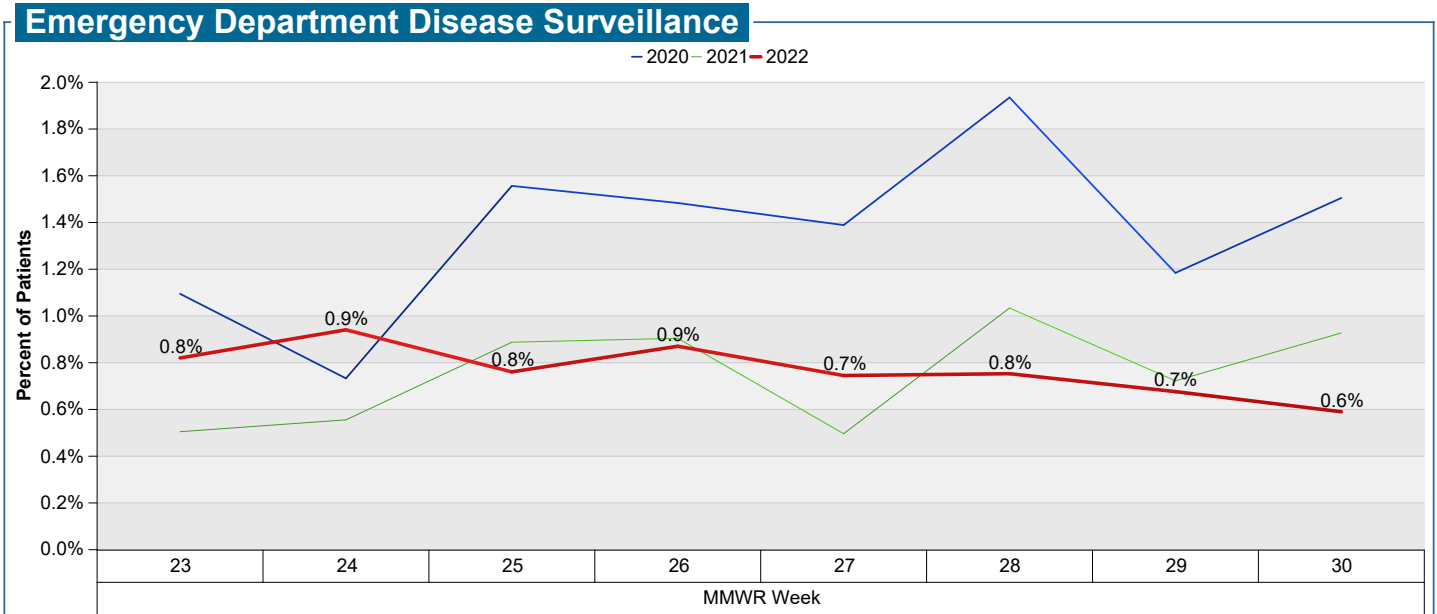
This chart shows whether the number of reported cases this week increased (red bar) or decreased (green bar) when compared to last week. Additionally, the size and label of each bar indicates the percent of change from the previous week.

Yellowstone County COVID-19 Information

Updated through week ending July 30, 2022



Testing results supplied by medical Unified Health Command (UHC) partners Billings Clinic, St. Vincent Healthcare and RiverStone Health. The yellow line represents a symptomatic positivity rate of at least 10%. The red line represents a symptomatic positivity rate of at least 20%.



This chart shows the percentage of Yellowstone County Emergency Department (ED) visits where the chief complaint or symptom was fever or chills and at least one of these other symptoms: cough, difficulty breathing, shortness of breath. The blue line indicates ED visits each week for these symptoms in 2020. The green line represents ED visits for similar symptoms for the same time period in 2021. The thick red line indicates ED visits each week for these symptoms in 2022. Data supplied by the State of Montana collected from Yellowstone County hospitals.

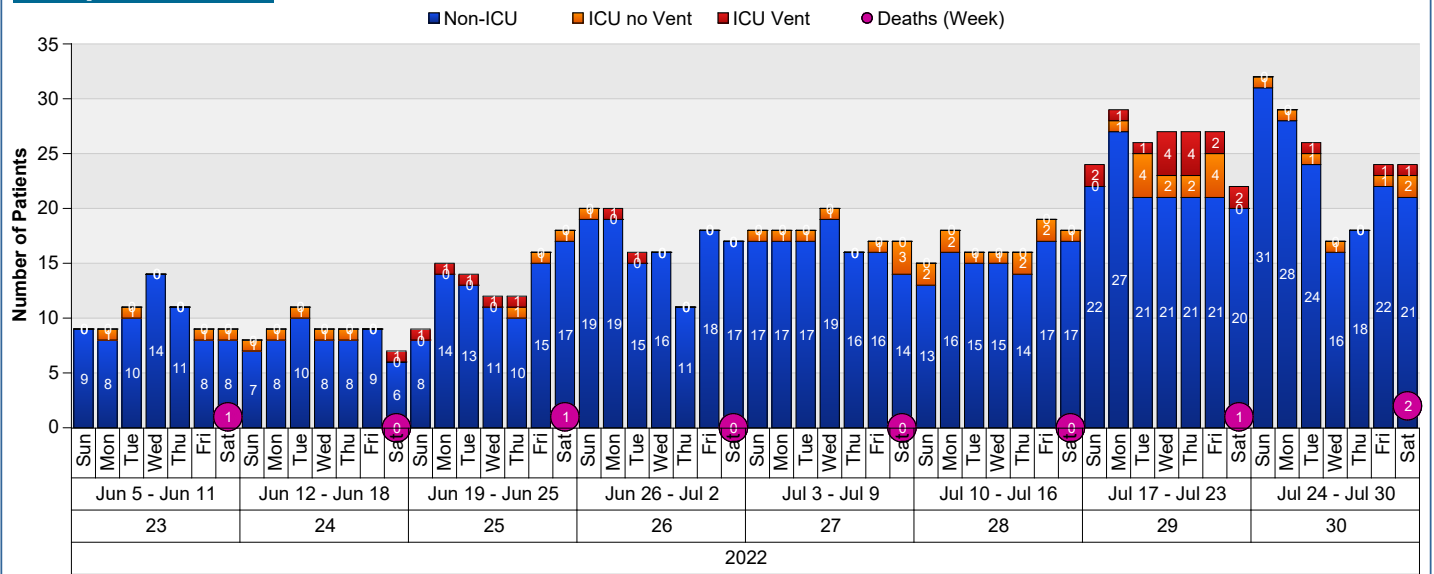


Yellowstone County COVID-19 Information

Updated through week ending July 30, 2022

Connecting you to a better life[®]

Hospital Status



The total of each bar represents the total number of people hospitalized in Yellowstone County for COVID-19. Some of those patients may be from other counties or states. The blue represents the number of patients with COVID-19 who are hospitalized, but who are not in an Intensive Care Unit (ICU). The orange represents the number of patients in ICU with COVID-19, but not on a ventilator. The red represents the number of patients with COVID-19 who are on a ventilator. The purple circles indicate the number of Yellowstone County residents who have died due to COVID-19 each week, whether or not they were hospitalized at the time of death. Due to timing of notification, deaths may not be reflected immediately and are recorded as notification occurs.

Yellowstone County COVID-19 Test Positivity Rate

No Data Available

As of 4/20/2022, the Montana Department of Public Health and Human Services is no longer providing Yellowstone County COVID-19 positivity rate data, therefore the graph depicting that information has been removed.